



# Extra News

Autumn / Winter 2014

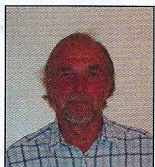
## Parish Councillors



**Chairman**  
Chris Wesson  
11 Hestia Close  
Romsey SO51 8PA  
Tel: 01794 511535  
Email: cllrwesson@talktalk.net



**Vice Chairman**  
Teresa Hibberd  
2 Church Cottages, Lee  
Church Lane, Lee, Romsey  
SO51 9LG  
Tel: 023 80 732247  
Email: Hibberd67@aol.com



Andy Carter  
23 Avon Crescent  
Romsey SO51 5PX  
Tel: 01794 517139  
Email: andyc@m201.com



Ian Hibberd  
2 Church Cottages, Lee  
Church Lane, Lee, Romsey  
SO51 9LG  
Tel: 023 80 732247  
Email: ihibberd@romsey.btinternet.com



Alison Johnston  
73 Winchester Road,  
Romsey SO51 8JB  
Tel: 01794 517939  
Email: ali.johnston001@virginmedia.com



Jenny Mills  
15 Campion Drive,  
Romsey SO51 7RD  
Tel: 01794 516374  
Email: campion4@talktalk.net



John Parker  
Cornerways, Highwood Lane  
Romsey SO51 9AF  
Tel: 07825 514348  
Email: parkerjsxx@aol.com

## Parish Clerk



Carol McFarland  
Cowesfield Lodge,  
Romsey Road, Whiteparish  
SP5 2QY  
Tel: 01794 884826  
Email: clerk.romseyextra@parish.hants.gov.uk

## Message from the Chairman

Firstly I would like to draw your attention to a questionnaire enclosed with this newsletter. This is being circulated to all residents of Romsey Extra and Romsey Town in connection with the Romsey Neighbourhood Plan. Please take the trouble to complete and return it to The Town Clerk, Romsey Town Hall, Market Place, Romsey, SO51 5RH. Alternatively it can be completed on line at: [www.romseyneighbourhoodplan.co.uk](http://www.romseyneighbourhoodplan.co.uk)

Turning to parish matters, over the summer the parish council and the Woodley Village Hall management committee have had discussions regarding improvements to the hall. The hall, which is owned by the parish council, is a major asset. It is available for hire and is suitable for a wide range of functions and meetings.

<http://www.woodleyvillagehall.co.uk/index.asp> In recent times the hall committee, which has responsibility for the management of the hall, has been very successful in raising funds and obtaining grants for interior upgrades but the main hall, known as the Woodley Room, and the kitchen also need upgrading.

The parish council retain responsibility for maintenance of the grounds around the hall as well as the grassy area between the car park and Short Hill.

Recently the parish council put forward a scheme for discussion with the hall management committee. This was aimed at making the hall frontage generally more welcoming with a paved rest area, together with benching and shrubs. A cycle rack has also been

included. First impressions are important and the appearance of the hall exterior is vital to create a good impression to existing users, the passing public as well as potential users. The scheme has been agreed with the hall committee and we look forward to further discussions with them prior to funding being sought and work carried out. Definitely something to look forward to.

For some time now the parish council has not had a website. A specification was drawn up some time ago now and three professional website developers were invited to submit proposals and costings. Accordingly one was selected but despite efforts on our part to get things moving it eventually became clear that we had been let down.

So at the end of July 2014 the decision was taken to cancel the existing contract. A new website developer was identified and in October work commenced. Although we do not have a completion date as yet, we have reasonable expectations that we should have a website up and running some time in December.

This will eventually enable users to get information on: the parish council, its role, the councillors and meetings; planning, documents; history of the area and photo gallery and contacts.

It will take some time to upload everything we want to make available, but in time we very much hope that it will become a useful service and a resource to users.

Finally, I would like to wish you all a very Merry Christmas and a Happy New Year.

## Roaming Rendezvous — Alison Johnston

Roaming Rendezvous is an informal meeting opportunity for all local residents and is held at Woodley Village Hall on the last Friday of every month from 10am to 12 noon.

Launched in early 2013, we provide easy access to information, therapies, games and crafts all within a café environment where people can come and go as they wish. The parish council has

granted funding to help with hall



hire costs and the Rendezvous idea has recently been accepted

onto the Government's "Our Place" programme, attracting a further £10,000 to develop the concept.

The café is run by volunteers with help from Carers Together and everyone is very welcome. For further information, please contact Cllr Alison Johnston (email: [cllrajohnston@testvalley.gov.uk](mailto:cllrajohnston@testvalley.gov.uk))

or Marianne Piggin ([mpiggin@testvalley.gov.uk](mailto:mpiggin@testvalley.gov.uk))

## John Fyfield of Stanbridge— Phoebe Merrick

Recently I have been editing Dr John Latham's notes for the history of Romsey that were compiled about 200 years ago. Amongst much fascinating material is this description of John Fyfield of Stanbridge who was born in 1716 and died in 1796. This account is described as an 'Eccentric Biography' and was written in 1803.

'Mr. John Fyfield ... was a man of a most eccentric turn of mind and great singularity of conduct. The manor of Stanbridge he inherited from his ancestors who had been possessed of it for many generations.

'He was of a parsimonious disposition yet he would hardly ever suffer any timber on his estate to be felled, though it abounded with the finest trees in the county a great many of which were annually perishing. The price of fifty guineas had once been offered for his far-famed oak tree. He was tempted to part with it but he repented of his bargain and was happy to repurchase it almost immediately at

a higher price.

'All repairs of his mansion were prohibited as a useless extravagance that would reduce him to poverty and while such a superfluity of materials as would have paid his expenses and rendered his habitation comfortable were rotting at the door, he chose rather to reside in it with the roof open in many places to the heavens with hardly an apartment that afforded shelter from the weather and with the joists and floors rotting in the wet that entered, the outbuildings being in a similar state and the repair of them alike prohibited.



'He was totally blind for many of the latter years of his life, when his chief enjoyment was a pint of strong beer, which he usually quaffed twice or three times a week at the Dukes Head at Great Bridge about a mile from his own house, whither he was led by a boy who constantly attended him.

'For many years he had strong antipathy to the making of a will considering it as a prelude to a speedy death. But the arguments of a very amiable wife who turned many of his singularities into an harmless channel at length prevailed over his prejudices and induced him to make [a will].'

He had several children, and one of his daughters Catherine married Charles John Hall the brewer who owned the Horsefair Brewery that eventually became Strong's Brewery. They lived at Stanbridge Earls for many years. Many years in the 20<sup>th</sup> century later much of the timber was bought by a timber merchant and duly harvested.

## Highways Update

### CLOSURE OF SCHOOL ROAD

The closure of the Braishfield Road end of School Road is part of the traffic calming associated with the Abbotswood Development. The

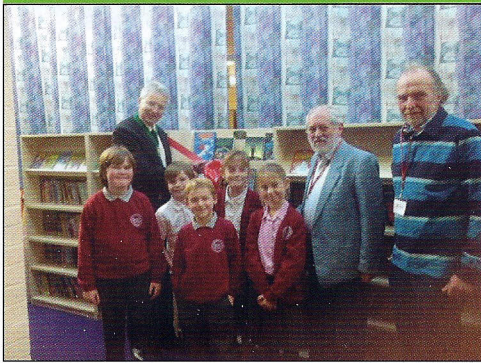
works associated with this closure are due to start in the New Year.

### 30MPH SANDY LANE

We are pleased to hear that the County Council will be sorting out

the speed limits on Sandy Lane by imposing a 30 mph speed limit on that section of Sandy Lane currently 40 mph between the two existing 30 mph sections.

## Halterworth School Grand Opening of Comic Section



"On Monday 24th November, we had some very special visitors in to school from Romsey Extra Parish Council who came along to the grand opening of our new comic

section. With a generous grant of £500 we were able to buy almost 100 graphic novels by a huge range of different authors and of different genres.

The eagerly awaited comic section will contribute to our Reading for Pleasure work as well as a comic club which will be starting very soon.

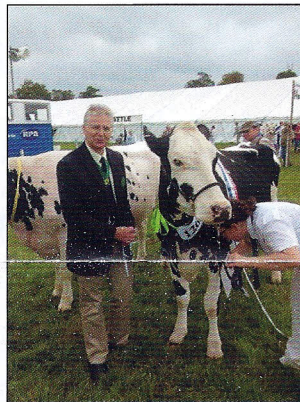
We are extremely grateful for the grant and would like to thank Romsey Extra Parish Council for making this possible".

*Lorraine Pattinson Halterworth School*



## Other Grants Made by Romsey Extra Parish Council this Year

**The Beaver Maple Colony of the 10th Romsey Scout Group outside their Tent**



**The Romsey Show  
Saturday 13 September**

**Woodley Close Community Picnic  
Saturday 9 August**



## Romsey Police Rural Beat —PCSO Jo Cole

### **CRIME PREVENTION ADVICE ~**

Now the festive season is approaching here are a few reminders when out shopping.

- Park your car in a well-lit car park, preferably one that's attended.
- Before you leave your car, ensure all windows and doors are closed and locked, try to avoid leaving your purchases and presents in your vehicle. If you do leave items in the car, make sure they are not on display.
- Make sure your handbag is closed, your purse is tucked in the bottom of your bag and your wallet is in an inside pocket, this will reduce temptation from a pick-pocket.

- Don't leave a bag unattended in a trolley, even if only for a couple of seconds.
- Keep your PIN number for bank cards confidential. When entering your PIN at a terminal, ensure no one can see you and you cover the PIN pad with your hand.
- Try to pay for items on a debit card rather than carrying large amounts of cash. Alternatively, keep the amount you carry to a minimum.
- Think about the item you are buying someone. There are a number of security products you could purchase to help them keep them safe and secure? i.e. if buying a bike, think about also giving a decent "D" lock or a small safe.

### **AT HOME**

- Leave it until the last minute to put Christmas presents out under the tree and don't leave them in view of a window.
- If you are buying or receiving valuable gifts such as bikes, mobiles or electrical items, register them for free at [www.immobilise.com](http://www.immobilise.com). Doing this can assist the police in returning your property should it be lost or stolen.
- Refrain from keeping large amounts of cash at home.
- A secure home will reduce the chance of a burglary. Make sure windows and doors are locked and remove keys from sight every time you leave the house.

# Woodley & Crampmoor Friendship Club

The club meets on the 1st and 3rd Wednesday of each month in Woodley Village Hall at 2 pm and is open to members over 55. There are slideshows, talks, demonstrations, bingo and some social time (chat) at each meeting.

**2015**

## **JANUARY**

**7th** "Temperance Movement in Victorian Times" Stephen Ings

**21st** "Elbe—Berlin to Prague"

Gordon Massie

## **FEBRUARY**

**4th** AGM

**18th** "Theme Parks & Chocolate"

Gordon Lewis

## **MARCH**

**4th** "Travels with my Camera"

Steve Williams

**18th** "Radio Times" Broadcasting

Memories John Pitman

## **APRIL**

**1st** Bingo

**15th** TBA Carol Watson

## **MAY**

**6th** Blue Lamp Trust

**20th** "Memories of Romsey"

Barbara Burbridge

## **JUNE**

**3rd** Club Outing

**17th** "Is this the Real India?"

Gwen Appleton

## **JULY**

**1st** Members Afternoon

**15th** Bingo

## **AUGUST**

**5th & 19th** Half Day Outings

## **SEPTEMBER**

**2nd** Club Celebration 25 Years

**16th** "New Zealand" Geoffrey Blackford

## **OCTOBER**

**7th** "History of Underwear" Ruth King

**21st** "Meandering Along the Meon"

Jill Daniels

## **NOVEMBER**

**4th** "Wildlife of a Working Forest"

Mike Read

**18th** "The Humorous Poet" Dennis Bryant

## **DECEMBER**

**2nd** Bingo

**16th** Christmas Party

## Completion of 2013/14 Audit

"On the basis of our review, in our opinion the information in the annual return is in accordance with proper practices and no matters have come to our attention giving cause for concern that relevant legislation and regulatory requirements have not been met." External Auditors. Copies of the Audit Return are available from the Clerk.

## School Admissions 2015

**The closing date for all Year R & Year 3 (junior) applications will be Thursday 15 January 2015.**

Parents who apply by this date will be advised of the outcome of their application on the national notification date of Thursday 16 April 2015. Parents who apply online will be able to log back into the online system to learn the outcome of their application from 16 April. Additionally, HCC will email the notification to you. For parents who apply on a paper application form, a notification letter will be sent in the first class post on 16 April.

## Council Meetings 2015

The Council **NOW** meets at 7.15pm in the New Dining Room, **Stroud School**, Highwood Lane, Romsey, SO51 9ZH (unless otherwise stated):

Thursday 8 January  
Thursday 5 February  
Thursday 12 March  
Thursday 9 April

**Annual Parish Assembly:**  
Wednesday 27 April 7.30pm  
(Woodley Village Hall)

Thursday 21 May **AGM**  
Thursday 11 June  
Thursday 9 July  
Thursday 13 August  
Thursday 10 September  
Thursday 8 October  
Thursday 12 November  
Thursday 10 December

## Contact List

### **Borough Councillors:**

Ian Hibberd 02380 732247 or [cllrihibberd@testvalley.gov.uk](mailto:cllrihibberd@testvalley.gov.uk)  
Alison Johnston 01794 517939 or [cllrajohnston@testvalley.gov.uk](mailto:cllrajohnston@testvalley.gov.uk)

### **County Councillor:**

Roy Perry 01794 322472 or [roy.perry@hants.gov.uk](mailto:roy.perry@hants.gov.uk)

### **Member of Parliament:**

Caroline Nokes 01794 521155 or [caroline.nokes.mp@parliament.uk](mailto:caroline.nokes.mp@parliament.uk)

### **Carers Forum & Carers Club:**

[anne@meader.com](mailto:anne@meader.com)

**Diabetes Aware:** 01794 515126

Mark Wilkinson ACSO 0845 6001747

**Mobile Library:** 023 80 267393

Moped Loan Scheme: 0845 5216405

**NOMADS:** amateur dramatics - ticket sales 01794 523578 or 02380 348317

**Police: Safer Neighbourhood Team: 101**

### **Romsey Citizens Advice:**

01794 516378

**Romsey Dial-A-Ride:** 01264 356808

**Romsey Sea Cadets:** 01794 511161

**Romsey Twinning:** 01794 514880

**Test Valley Community Services:**  
01794 519998

### **Scouts - Romsey District Scout**

**Council:** Mr D Sutton 01794 502817

### **Woodley Village Hall Booking:**

Mrs Garland 01794 523473

**Youth in Romsey:** 01794 500581

E-mail: [clerk.romseyextra@parish.hants.gov.uk](mailto:clerk.romseyextra@parish.hants.gov.uk)

We welcome any feedback you might have on any issues raised in this newsletter or any other issues that concern you in the local area. Your feedback will help us to confirm that we are representing the general views of the parish as well as identifying particular problems that we are not aware of. We welcome any comments you might have and your participation